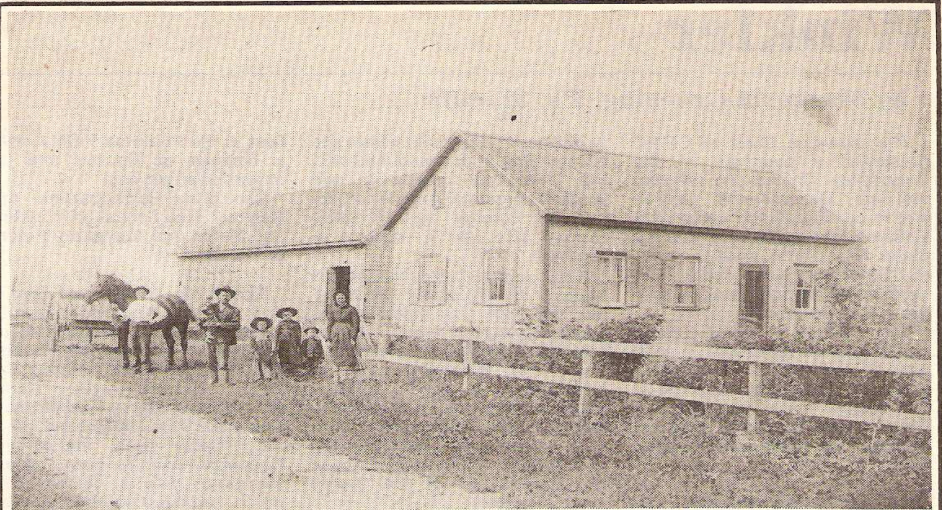


ECHO JAN. 18, 1984

3



The pioneers were hardworking and within two decades (before 1900) such fine prosperous farmsteads showed the result. The photo shows the Peter P. Braun family. Mr. Braun is one of the original settlers in the village, and, being a carpenter, he built these buildings.

## Old Altona (Darp Aultneiv)

Just one mile south of the town of Altona lies the village of Old Altona. The reason it is called Old Altona is because it is older than the town by 15 years. This village was first settled in 1880, when a group of men from the East Reserve filed for homesteads in this area. They could have chosen to settle on their respective homesteads, but they preferred to live in a village.

The village system was a tradition brought over from Russia. It was a system whereby the best location was chosen to establish the village and the rest of the land was divided into strips (kagels). This system enabled the residents to more or less have equal land of equal quality.

In Canada, where the homesteads were all registered in individual's names, they had to have an agreement to make this system possible. The Altona Village agreement, unwritten until 1889, was dissolved in 1898. Very often such dissolution of the agreement caused the breakup of the village. This did not happen at Altona; rather the land titles were adjusted so that each resident owned the yard he lived on.

Shortly after the village was established, the railway came

to this area. At first it had wanted to split the village but a protest by the residents changed the route. It came through the northwest corner of the village in 1882, probably before the village was fully settled.

While the railway was being built the CPR crew received food at the villagers' homes. It must have been an exciting time for the youngsters of that era to watch the railway being built and later watch the train go by twice a day.

Another exciting incident of a different nature happened 20 years later when the teacher went on a shooting spree in the school in 1902. The result of it was that one of the students died and the teacher died later of self-inflicted gunshot wounds.

The Altona public school district No. 333 was established on Aug. 19, 1884, by a Douglas By-law No. 13. Apparently they had had a private school for the first few years. The public school operated in the village until the 1920s, after which the pupils were transported to the school in the town of Altona.

J. J. Rempel, the first person born in the village, later became a well-liked and respected councillor in the R.M. of Rhineland. He served in



Teacher Henry Toews

Ward 6 for 24 years from 1922 to 1945.

The village has survived the years and could now well be called the suburb of the town of Altona.

Information sources: from the book "Altona, the Story of a Prairie Town" and from the manuscript of the book "Rhineland 1884-1984".