

No. 4 A Amsterdam

Echo July 14 / 1990

By ?

Congratulations Dairy.

### Amsterdam School District Reunion

Sunday, June 24, was a special day for 250 former residents of the Amsterdam School District, as some of them met for the first time in many years at a reunion, held at the Rhineland Pioneer Centre in Altona.

The morning worship service

was chaired by Abe J. Thiesen. A time of praise and worship filled the room, when the group sang "To God Be The Glory", "How Great Thou Art" and "Jesu, Geh Voran". Dennis Driedger read Psalm 8. A slide presentation brought back many fond memories. Special music by Linda Hiebert was enjoyed by all. Rev. David F. Friesen spoke on "Coping with Change".

The afternoon was spent in reminiscing by some of the group who came all the way from B.C., with others coming from Winnipeg, Steinbach, Carman, Winkler, Altona and area.

The offering taken totalled \$924, with expenses totalling \$577, the overhead amount of \$347 was donated to M.C.C.

A short history of Amsterdam: when the district was first established there were no dikes or ditches. The land is low lying and of heavier soil, and was therefore one of the later areas of the Rhineland Municipality to be settled.

One of the first uses of this land was around the year 1890, when farmers of the surrounding area leased it from the government for making hay.

This district was established by Rhineland By-law No. 50 on June 2, 1896, as S.D. No. 885. It operated as a public school from the start and continued until July 1, 1965, when it became part of Consolidated Rosenfeld. However, in the early years the pupils were taught in private homes or empty granaries. In 1900 three acres of land was bought and the first school was built on SE35-2-1W, (presently home of Wesley Braun).

Instead of settling in a village, they settled on individual quarters. Very often these homesteads were abandoned or sold after a few years because of the persistent flooding. The land was bought by farmers from higher ground, who used it for hay.

The Buffalo Channel ditch, east of Highway 30, better known as the Double Dike, was dug in 1904 by a

3 or 324-5001

ECHO JULY 14, 1990

4A

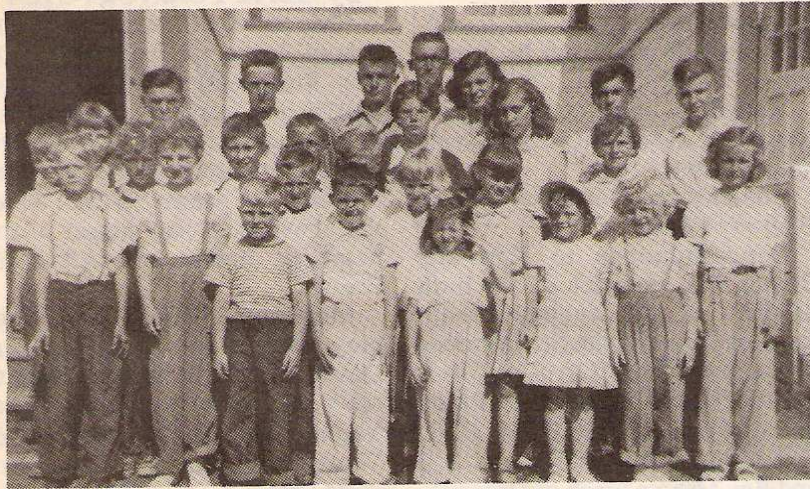


Photo shows the original Amsterdam School in 1951-52 with pupils and teacher Harold Schulz. Family names at this time were the following: Schellenberg, Hiebert, Hoepfner, Letkeman, Funk, Schroeder, Winter, Klassen, Buhler, Doerksen, Driedger, Braun, Siemens, Redecop, Dueck and Fehr. This school served until 1955 when a new school was built.

floating dredge. Because of frequent summer flooding, the dikes were built in 1928. This greatly improved the area, but some flooding problems persist even to the present time.

In the Great Depression the abandoned homes were repaired and once again occupied. This influx caused an increase in students, making the one-room school bulge at the seams with up to 60 pupils.