

Echo → May 30/1994 (20)

# Grimsby also Heuboden and Reinthal

• by J. C. Fehr

The Grimsby School District No. 1993 was established by order-in-council on February 21, 1920. It operated until January 1, 1970, when it became part of Plum Coulee Consolidated. The school was located four miles south of Plum Coulee on SW 24-2-3W. Grimsby is one of the few districts better known by the English name than the original German ones of Heuboden and Reinthal. It was probably because the Grimsby Public School replaced the two private schools at Heuboden and Reinthal that the English name was adopted for this district. The Heuboden private school was located one mile east and one mile south of the Grimsby school site, while the Reinthal private school was located two miles north of Heuboden.

The Reinthal private school operated until the Grimsby public school was opened around 1922-23 while the Heuboden private school had closed a few years earlier around 1918-1919.

Both these old districts started off as villages though there is very little evidence that they operated as village units for very long. When the district of Grimsby were established it took in all of Heuboden, but Reinthal was divided up between Thames and Grimsby.

The soil in this area is mostly of the medium to medium-light type. That makes it ideally suited for all kinds of special crops.

The women of this community organized a mission group seven years ago. There are 19 ladies in this group and some are from the surrounding area like Plum Coulee and Thames. They sponsor a mission sale in fall and a supper in spring with proceeds going to missions. They are also quite active in the community — serving meals at weddings and other community events.

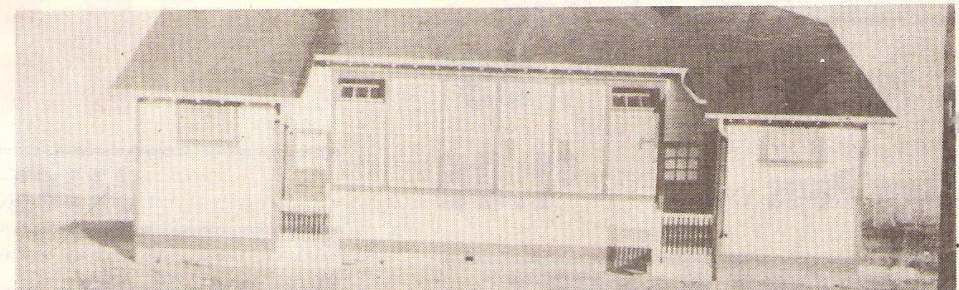
With the generous support of the community at large, they have begun a new venture; the opening of a Thrift Shop in the old Stewart Bros. Store building in Plum Coulee. It's now in its fourth year of operation.



Among the students in the old photo of the early years are Peter Kehler, William Penner, Bill Wiebe, Jake Wiebe, G. Derksen boys, Buhler boys and Diedrich Penner.



More recent photo of 1958: Front row: Martha Penner, Tina Loewen, Judy Nickel, Linda Giesbrecht, Gordon Dueck, Philip Reimer, Cornie Thiessen, and Edwin Penner. Second row: Wilma Enns, Mary Penner, Irene Giesbrecht, Sheila Harder, Rodney Harder, David Penner, Frank Harder and Henry Loewen. Third row: Edna Enns, Elvira Klassen, Hilda Penner, Margaret Thiessen, George Penner, Ken Reimer, Bernie Penner, John Penner and teacher J. J. Enns. Back row: Annie Thiessen, Ella Klassen, Gertrude Giesbrecht, Abe Penner, Bernie Penner, Richard Enns and Henry Penner.



The school photo taken when the school was quite new shows the two entrances one for the boys and the other for the girls. It's what they call a Green-way model. The school was renovated in 1953, given a quarter turn and placed on basement. When the school closed in 1970 it was sold and moved to Gnadenthal to serve as a hog barn.