

ECHO June 27, 1984

24

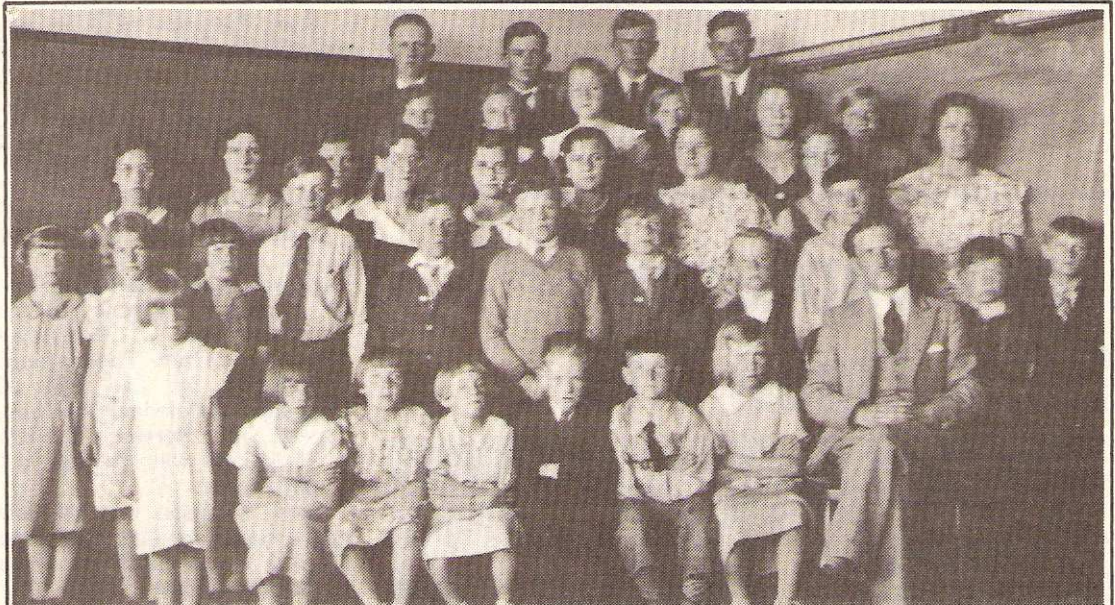


Photo shows teacher Nick G. Neufeld and students in the early thirties. He taught here for five years. Family names of the students include: Hildebrand, Dyck, Banman, Reimer, Olfert, Peters, Rempel and Braun. Some of these have already passed away. Mr. Neufeld was very much involved in the community, he not only taught the basics, but also taught music, had an orchestra and a choir.

Kronsgart: Little is left

• by J. C. Fehr

The Kronsgart School District No. 2151 was established by a Judge's Order on June 7, 1926. It operated until July 1, 1967, to become part of the Winkler School District. Kronsgart was a small district located in the extreme NW corner of Rhineland Municipality. It extended partly into the R.M. of Stanley and also partly into the R.M. of Roland. The public school was located on SE 36-3-4W in the Stanley R.M. This was one mile west and one mile north of where the original

private school had been located.

Even though this was only a small community the school did have up to 50 students.

The area here was originally settled before the turn of the century. They homesteaded on their individual quarter sections, so no village as such was established.

When the railway was built from Plum Coulee to Carman, a railway siding and elevator was built and named Kronsgart. In actuality this station was not in the district of Kronsgart, but rather in the neighboring district of Rosewell. This elevator served the area

farmers for many years until the railway line was taken up.

In the latter years the train had to back up from Plum Coulee to pick up the grain cars at Kronsgart. There is a saying that at one time one-third of the population of the "town" of Kronsgart were Englishmen, and he was the elevator manager. It had a total population of three.

Today the elevator is gone, a church near the elevator is gone, the railway track is no more and the schoolhouse of the district of Kronsgart is also gone.