

## New Kennedy once hayland

• by J. C. Fehr

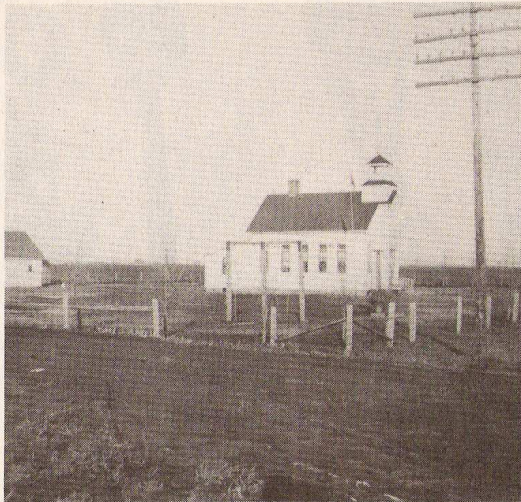
New Kennedy S.D. No. 1573, situated on the northern boundary of the Rhineland Municipality directly north of Rosenfeld was established on June 29, 1911. The school, built in 1912, was located on SE 32-3-1W. This district operated until July 1, 1965, when it became part of Rosenfeld Consolidated.

Being a low-lying area, this district was one of the last of the R.M. to be settled. In the early years it was used mostly for making hay, by farmers farther south. The land was mostly owned by a few large landowners. One of them was a Jack Kennedy. It was after this man that the district was named.

As the story goes, there already was a Kennedy school in Manitoba, so this one received the name of New Kennedy. This district differed from most of the other rural districts in that there were people of four different faiths living here.

There were Baptists, Catholics, Lutherans and Menonites. There also have been teachers of these various faiths, who have taught in this school.

After the drainage came through, this has become a prosperous farming area.



**The school. It is interesting to note that the school was built with a bell tower, however no bell was ever placed into it. A portion of the school served as a teacherage until 1938 when a two-room annex with basement was built on to the west end of the school. This arrangement was very convenient for the teacher as he didn't have to go outside in inclement weather.**



**Second photo shows New Kennedy school pupils by the door. It was taken in the early 1940s. (Photos courtesy of Louis Pokrant)**