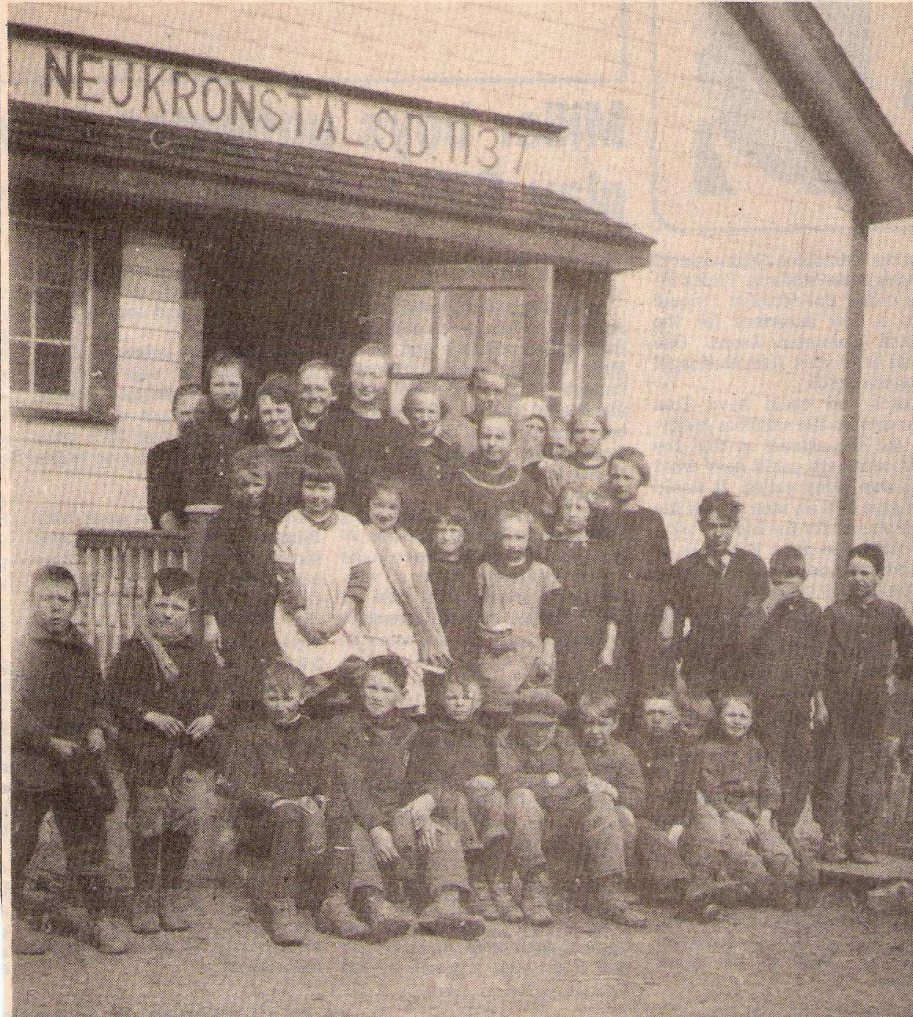


ECHO Oct 31, 1984

(33)

Neukronstal established in 1901

• by J. C. Fehr



This school photo at the Neukronstal school was taken around 1915-1920. The teacher was John H. K. Dyck. Family names included Dyck, Giesbrecht, Wiebe, Hiebert, Kroeker, Klassen, Wall, Penner, Unrau, Hildebrand and Unger.

The Neukronstal district is located directly north of Plum Coulee, between Hoffnungsort to the west and Grossweide to the east. It covers the area up to the northern boundary of the municipality, which is five miles north of Plum Coulee.

Neukronstal was established by a Rhineland By-law No. 96 on June 21, 1901, as S.D. No. 1137. It operated as a school district until January 1, 1967, when it became part of Plum Coulee Consolidated.

This area was probably settled in the 1890s as were the neighboring districts. It is said that some of the early settlers came from the village of Kronstal, hence the name Neukronstal. It is also said that this district at one time was part of Grossweide. Evidence to this fact is the cemetery located in this district which carries the name of Grossweide.

Some of the earlier settlers came here from the lighter soil areas farther south. The reason for that being that the sandier soil was hard on machinery bearings, particularly binders. Also the heavier soil was more productive with a better quality grain. That has changed with the advent of fertilizer, as today the lighter soil is more in demand for special crops like potatoes, sugarbeets, etc.

There is a waterway cutting across this district which in the earlier years had been the cause of many flooding problems. Later a dike was built by Manitoba Drainage, which solved the problem, except for heavier downpours when it can still cause local drowning of crops.

There is a likelihood that a private school was in operation in the years before 1900, the school location being Sec. 13-3-3W. The school was later moved and rebuilt on Sec. 19-3-2W, 3½ miles NE of Plum Coulee. It was replaced by a new school in the 1950s, built by Feakes and Wall. This has always been a one-room one-teacher school district.

A well known resident of this district was Reeve J. D. Giesbrecht. He served the municipality as councillor for Ward 3 for nine years from 1921-1929, and as reeve of the municipality for 18 years, 1930-1947.

After the school closed in 1967, the building was sold to Rev. D. F. Friesen, who remodelled it for use as his home on his farm one mile west of Rosenfeld.