

Reichenbach settled in 1880s

• by J. C. Fehr

One mile west of Rosenfeld along Highway 14, we come to the Reichenbach S.D. Turning north under a canopy of trees, we come to the location of the school. Of course the school closed in 1965, but the building is still there presently being used as a residence by A. Neustater.

Reichenbach is a small district between Rosenfeld to the east and Rosenheim to the West. It also took in an area south of Highway 14 down to the Buffalo Creek. It was originally settled in the 1880s. One of the home-

steads, John D. Klassen, built a private school on his land, SW 8-3-1W in 1885. He was teacher there for the first 10 years.

Reichenbach S.D. No. 1198 was established as a public school district on July 6, 1911. It used the original school until approximately 1920 when a new school was built across the road on SE 7-3-1W. Jacob F. Klassen, son of the first teacher, served as a trustee of this district for 14 years. In 1965 they consolidated with Rosenfeld. In good weather the pupils always had to walk, but in

wintertime some of the parents clubbed together to take turns hauling the students. This made for more enjoyable transportation to and from school.

The soil in this area varies quite a bit from the heavy gumbo in the northern part to the rich black loam in the southern part. Some of the older residents can still remember when the northern area was used only for hay. It didn't seem possible that it would ever be used for cropping. With the drainage coming through that has changed, so that today there are no hay fields left, except in the dikes.



These three photos depict three district eras in the school life of Reichenbach. The first photo shows the private school era, the second photo the early public school and the third the later public school. The private school pupils in 1910 are as follows: left to right: Marie Wiebe, Annie Klassen, Nellie Wiebe, Margaret Wiebe, Jacob Klassen, Marie Klassen, Helen Siemens, Tina Wiebe, Abram Klassen, Annie Siemens, Tina Klassen, Marie Wiebe, John Klassen, Jacob Siemens and Diedrich Wiebe.

Scroll down for second page

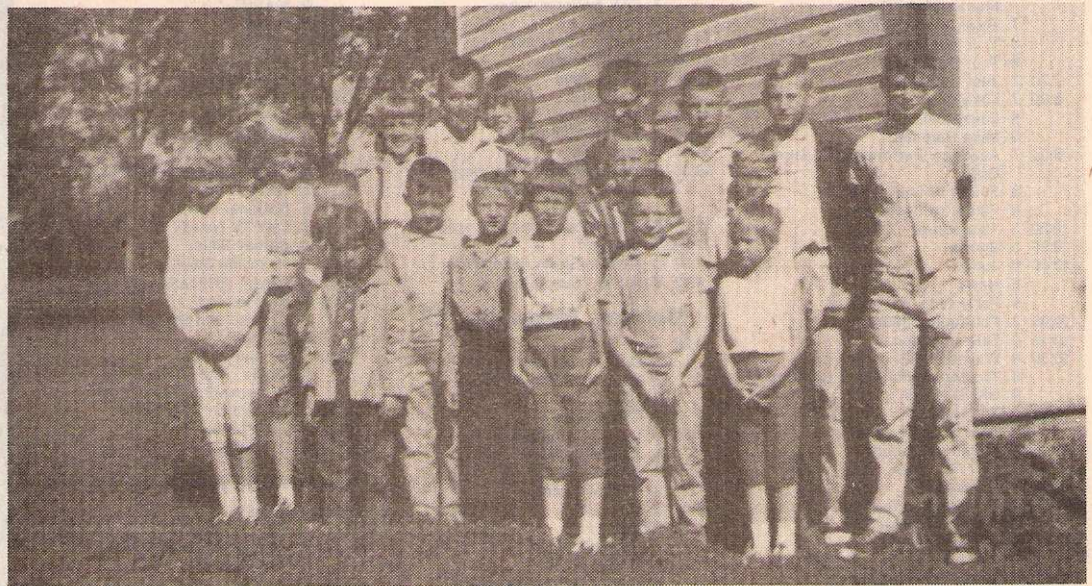
Echo Nov. 7/1984

(34)

Continued Reichenbach settled in 1880



The early public school pupils around 1926: from left to right: Practice teacher Miss Katherine Peters, David Nikkel, Rosie Smith, Bill Funk, Helen Zacharias, Anna Wiebe, Diedrich Wiebe, Eva Nikkel, Margaret Thiessen, Abe Nikkel, Bill Thiessen, Justina Berg, Peter Funk, Herman Nikkel, Lena Wiebe, Jake Nikkel, Tony Funk and long-time teacher P. A. Schellenberg.



This photo shows the pupils of the last year (1965) the school was in operation. Included are: Audrey Schellenberg, Robert Loewen (teacher), Darlene Zacharias, Tony Schellenberg, Raymond Funk, Elfrieda Klassen, Charles Funk, Julie Klassen, Irma Schellenberg, Janet Nickel, Edward Funk, Ted Schellenberg, Lois Nickel, Peter Neustater, Gerald Unrau, Howard Schellenberg, Ron Unrau and Jacob Unrau.