

Schoenau had private school

• by J. C. Fehr

Heading south of Weidenfeld we come to the district of Schoenau. It is located about three miles northwest of Altona. It was likely settled as a village before 1880, when the surrounding area was first settled.

Only a few yards remain of the village, but many large trees show mute evidence that the pioneers were here.

An interesting part of this district is a place called "The Fasting". It is located south of the village site near the 201 highway. This is a rise in the otherwise flat countryside which legend has been built up by the Indians. They say the Indian women built it up by carrying dirt with their aprons. They apparently used it as a battleground as many arrowheads have been found at the site.

The school district of Schoenau No. 2142 was one of the last of the rural districts to organize as a public school district. The original By-Law No. 80 to establish the district

was made on Feb. 6, 1900. It was later followed up by Rhineland By-Law No. 334 on January 5, 1926. Apparently the private

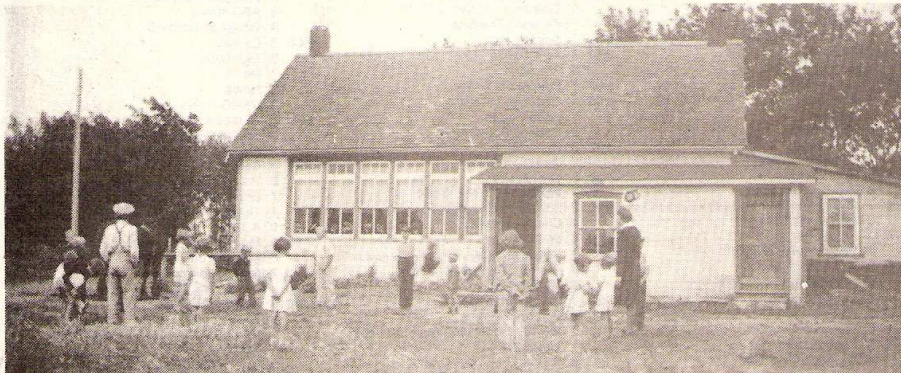
school operated until 1929. The public school operated until July 1, 1967, to become part of Altona Consolidated.



1938 Valentine's Day. Willie Braun, Peter Dueck, Margaret Friesen, Susie Schmidt, Bertha Schellenberg, Dora Schmidt, Mary Dueck, Henry Harder, Otto Funk, Cornie Fehr, Henry Schmidt, Ben Dueck, Tina Peters, Susie Wiebe, Mary Wiebe, Ed Schellenberg, Abe Braun, Menno Funk, Henry Peters, Eva Braun, Annie Schellenberg, Sara Wiebe, George Dueck, Edward Funk, Isaac Fehr, Peter Dueck, Peter Fehr, John Schellenberg, Willie Dueck, Isaac Friesen. Jacob K. Schroeder was the teacher.



This photo shows the private school building in 1936 being used as a public school.



The same building after renovations (like new windows). The leanto was the teacher's residence. This school was replaced around 1948 by a new school built by Hildebrand and Stoesz carpenters.