

Flood waters coming from Pembina River in 1950 covered much of this district. It is only four miles along the border to the Red River.

Strassberg map dated 1874

• by J. C. Fehr

The Strassberg district consists of six sections in the extreme southeastern part of the municipality. It was first established as a school district by a Rhineland By-Law No. 15 on March 7, 1893. Apparently the district school was slow in coming into being, as a private school operated here for many years.

A school was moved here from West Lynne (Emerson) by a horse and winch. It was located on SE11-1-1E.

In 1917 a new school was built and the old school was used as a teacherage. It burned down in 1931. The school district operated until January 1, 1967, when it became part of Consolidated Gretna.

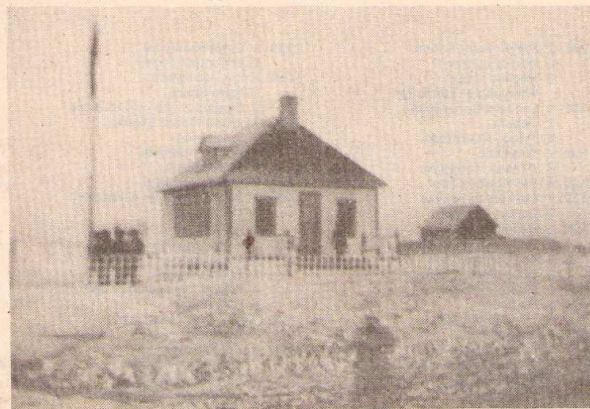
An official surveyor's map of June, 1874, shows names of the original homesteaders. They are: Friesen, Reimer, Loeppky, Rempel, Lempy, Gerbrandt, Janzen, Heinrichs. If they wanted more than one-quarter section, they had to buy it. Some had up to three quarter sections, and some were on a time scale. How this land came to be registered in their names as early as 1874 is not known. Standard information has it that the West Reserve was not settled before 1875.

Strassberg was not settled as a village, as each pioneer settled on in own land. It also did not have a church, so residents attended at Halbstadt. But it had a three generation line of preachers, beginning with Rev. Diedrich Loeppky (mentioned in last week's Halbstadt News). His son John Loeppky was also a preacher and his grandson Rev. Stan Loeppky is presently the pastor at the Halbstadt church.

In the early years before drainage was established, this



Pupils in this school photo of 1947 include: Marlene Pappel, Barbara Heinrichs, Susie Heinrichs, Lorna Heinrichs, Clara Loeppky, Gladys Heinrichs, John Heinrichs, Elva Loeppky, Joan Geske, Doreen Heinrichs, Edgar Loeppky, Wilbert Loeppky, Menno Friesen, Alvin Friesen, Bernie Loeppky, Tony Loeppky, Mathilda Friesen, Johanna Loeppky, Betty Heinrichs.



Strassberg school No. 757

area was considered a rather low-lying area prone to flooding. But the soil though is highly productive.

In 1943 the residents of three districts, Halbstadt, Houston and Strassberg, established a credit union. Later on they

formed a community organization and built the Halbstadt Community Centre. With the closing of the schools, the names of Houston and Strassberg have all but disappeared and presently this area is known as Halbstadt.